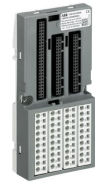


TU552-CS31



TU552-CS31:S500, Bus Terminal Unit, Spring

General Information

| | |
|-----------------------|---|
| Extended Product Type | TU552-CS31 |
| Product ID | 1SAP210400R0001 |
| ABB Type Designation | TU552-CS31 |
| EAN | 4016779650236 |
| Catalog Description | TU552-CS31:S500, Bus Terminal Unit, Spring |
| Long Description | TU552-CS31:S500, Bus Terminal Unit, Spring for CS31 Bus-Modules |

Additional Information

| | |
|--|--|
| ABB Type Designation | TU552-CS31 |
| ABS Certificate | 1SAA960002-0106 |
| Ambient Air Temperature | Operation 0 ... +60 °C Storage -40 ... +70 °C |
| BV Certificate | 1SAA960003-0204 |
| CN8 | 85389091 |
| CSA Certificate | 1SAA960000-1712 |
| Cable Cross-Section | 0.08 ... 2.5 mm ² |
| Country of Origin | Germany (DE) |
| Customs Tariff Number | 85389091 |
| DNV Certificate | 1SAA960002-0306 |
| Data Sheet, Technical Information | 2CDC125002B0206 |
| Declaration of Conformity - C-Tick | 1SAA960000-3302 |
| Declaration of Conformity - CE | 1SAD938504-0162 |
| Declaration of Conformity - KCC | 1SAA960001-4801 |
| Degree of Protection | IP20 |
| E-nummer | 4517207 |
| EAN | 4016779650236 |
| EPLAN Catalog Tree | Electrical engineering / PLC / General |
| Environmental Information | 1SAA960008-2403 |
| GL Certificate | 1SAA960004-0409 |
| GOST Certificate | 1SAA962000-2703 |
| Gross Weight | 0.28 kg |
| Instructions and Manuals | 2CDC125080M0202 |
| Invoice Description | TU552-CS31:S500, Bus Terminal Unit, Spring |
| LR Certificate | 1SAA960002-0506 |
| Made To Order | No |
| Maximum Operating Altitude Permissible | 2000 m |

| | |
|------------------------------------|---|
| Minimum Order Quantity | 1 piece |
| Mounting Position | Horizontal, Vertical possible with derating |
| Mounting Type | DIN rail and panel mounting |
| Mounting on DIN Rail | TH35-15 (35 x 15 mm Mounting Rail) acc. to IEC 60715 |
| Number of Analog Configurable I/Os | 0 |
| Order Multiple | 1 piece |
| Primary Voltage | 24 V DC |
| Product Depth | 40 mm |
| Product Main Type | TU552 |
| Product Name | Distributed Automation I/Os |
| Product Net Height | 135 mm |
| Product Net Length | 28 mm |
| Product Net Weight | 0.25 kg |
| Product Net Width | 67.5 mm |
| Product Type | PLC-AC500 |
| Quote Only | No |
| RINA Certificate | 1SAA960003-0807 |
| RMRS Certificate | 1SAA960001-0706 |
| RoHS Date | 1050 |
| RoHS Information | 1SAA960006-4410 |
| RoHS Status | Following EU Directive 2002/95/EC August 18, 2005 and amendment |
| Selling Unit of Measure | piece |
| Serial Port 1 Type | CS31 |
| Serial Port 2 Type | I/O-Bus |
| Short Description | TU552-CS31:S500, Bus Terminal Unit, Spring |
| Stocked At (Warehouses) | Central Stock Europe SGRDC002EXPU SGIND002EXPU AUABB024EXPU CNYKAEXPU |
| Supply Voltage | 24 V DC |
| Terminal Type | Spring Terminals |
| UL Certificate | 1SAA960000-1612 |
| WEEE B2C / B2B | Business To Business |
| WEEE Category | 5. Small Equipment (No External Dimension More Than 50 cm) |
| cUL Certificate | 1SAA960000-1712 |
| cULus Certificate | 1SAA960000-1712 |

Categories

PLC Automation → Programmable Logic Controllers PLCs → AC500 → Communication interface modules

